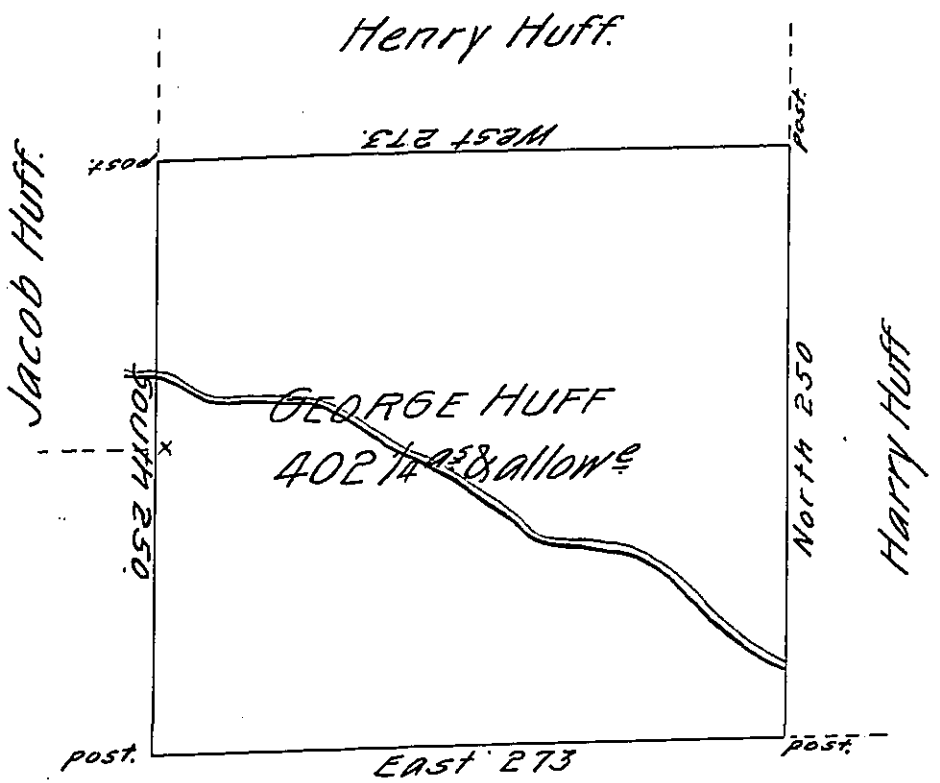


pg 168



pg 157

Situated on the waters of Tonollaway Creek, in Bethel Township, Bedford County, Containing 402 1/4 Acres with the Usual Allowance of Six per Cent for Roads &c.

Surveyed for George Huff the 27th Day of October 1794, on Warrant Dated the 21st Day of February 1794.

George Woods, Jun^r. D.S.

To Daniel Brodhead, Esq^r. S.G.

Examined by me December 13th 1808.

To Samuel Cochran, Esq^r

John Anderson

Surveyor General.

Deputy Surveyor.

IN TESTIMONY that the above is a copy of the original remaining on file in the Department of Internal Affairs of Pennsylvania, made conformably to an Act of Assembly approved the 16th day of February, 1833, I have hereunto set my Hand and caused the Seal of said Department to be affixed at Harrisburg, this twenty-fourth day of April 1905.

Isaac D. Penrose
Secretary of Internal Affairs.